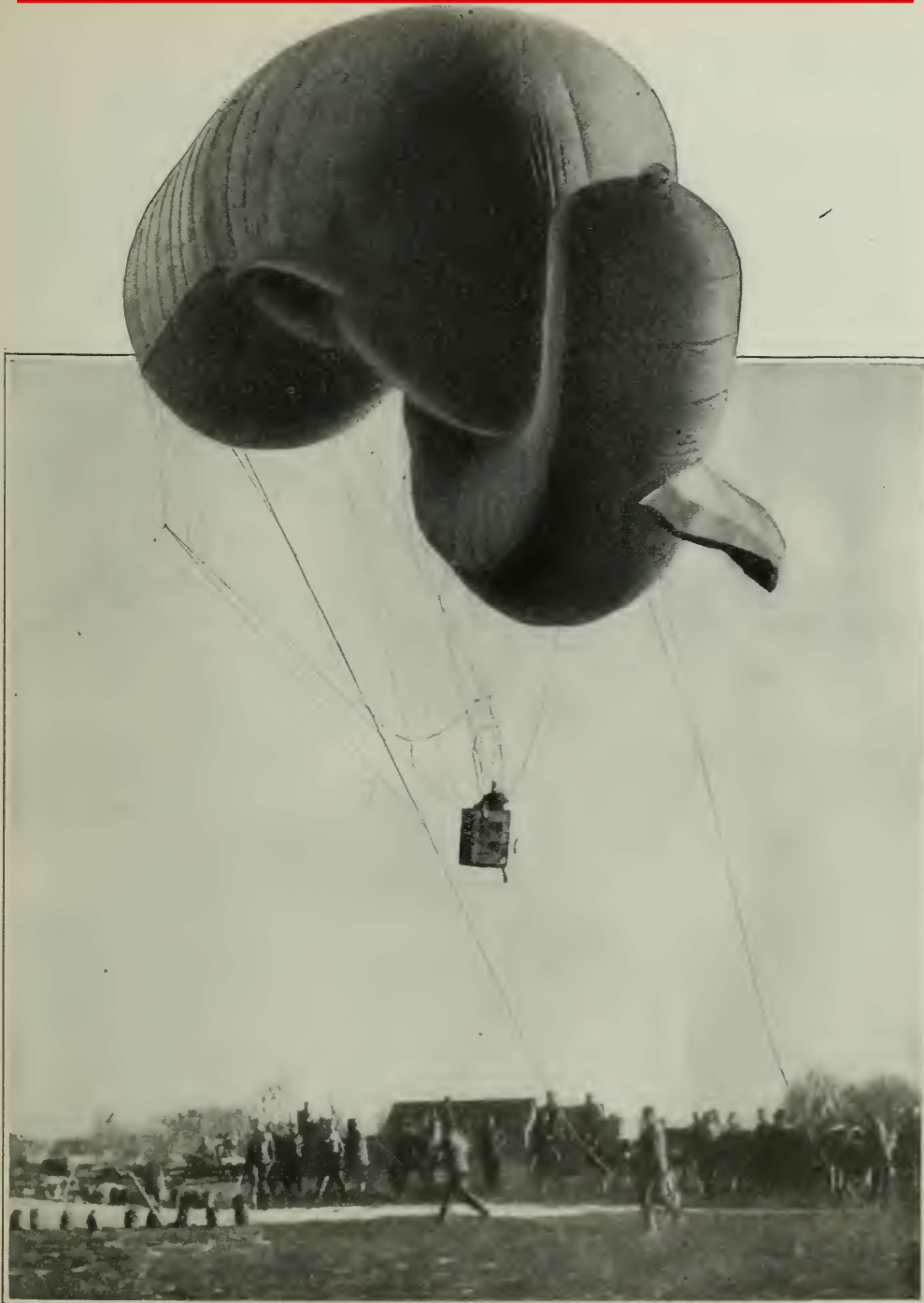


Directing Artillery Fire from a Serbian Captive Balloon



© International Film Service.

A Serbian captive observation balloon ascending for a survey of the Austro-German positions. This is built on the German Parseval plan, the sausage-like appendix to the main envelope acting somewhat like the tail to a kite, giving the balloon great stability in the air. Such balloons are almost standard in European armies