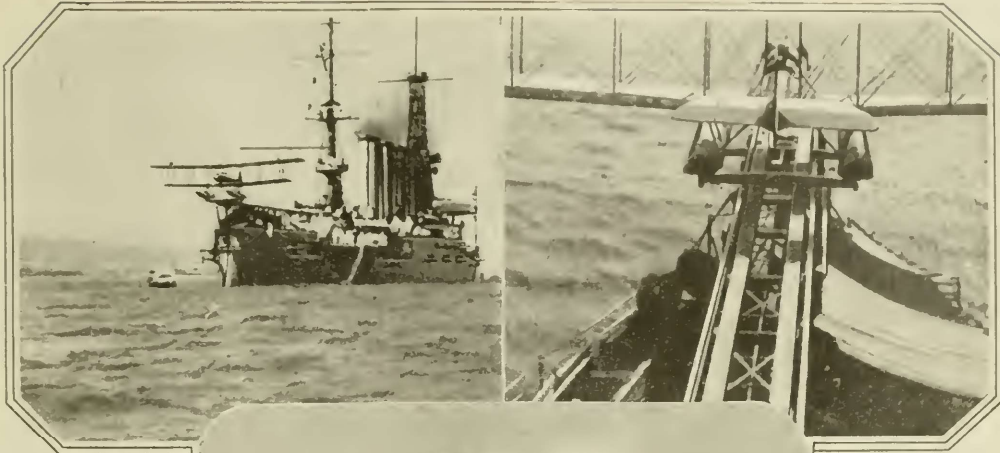
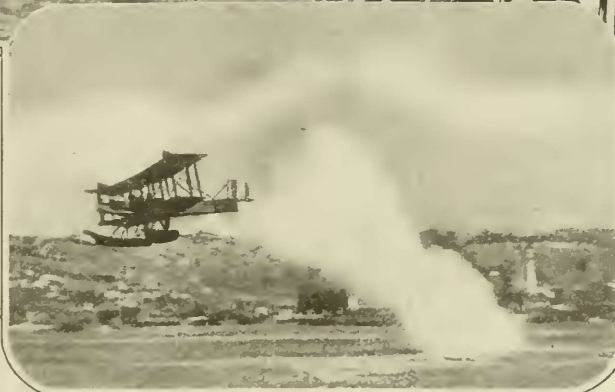


How Our Naval Falcons Are Unleashed



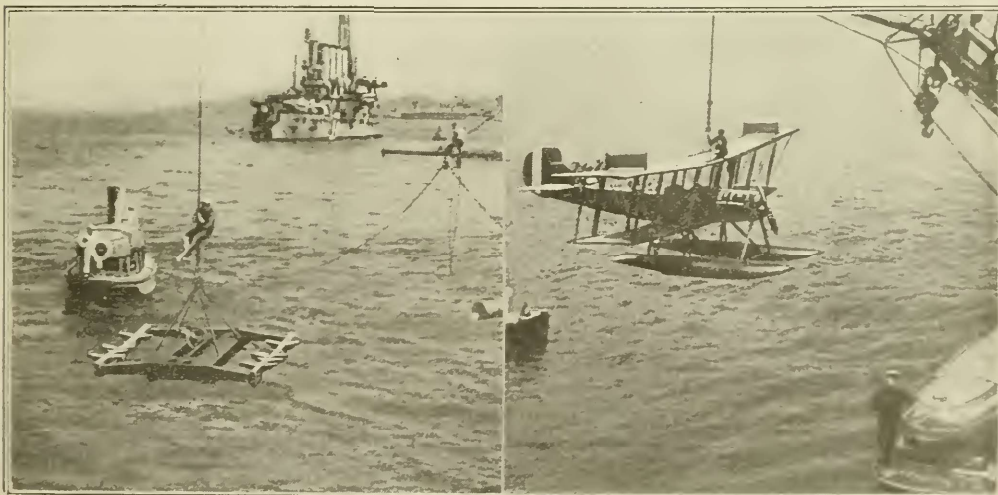
A hydroairplane at the moment of being launched from a cruiser. It rests upon a wooden car driven by compressed air power



This shows the track, fifteen feet above the deck of the ship, which serves for the launching of the hydroairplanes

At the end of the track the wooden car, which weighs about 400 pounds, drops into the water with a mighty splash, while the airplane lightly speeds on its way

Photos by Prizma, Inc.



The car is recovered by a waiting launch and towed back to the ship, to be hoisted aboard to be used again at the next start

Having completed its flight, the hydroairplane comes to rest in the lee of the ship and is once more hoisted aboard her