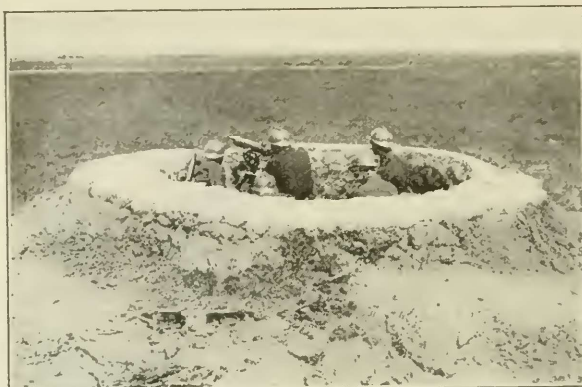


Let 'Em Come—This Outpost Will Account for Itself

IT is innocent-looking country, isn't it—that shown in the illustration on the right? Might be New Jersey flats, or a section of Northern Indiana, or a piece of Middle-western prairie. Yet a few hundred yards off toward the horizon are the enemy lines, and the Germans are in them. The country isn't as benevolent-looking or as calm and peaceful as it seems. Such outposts as this may soon be occupied by our boys in great number. Because the country is flat, a machine gun is effective over a wide area.



© Kadet and Herbert

A French outpost close to the German lines. Mud-soaked sandbags form the low parapet

Weep No More, Landladies. The Light-Wasting Roomer Is Checked

THE reason landladies are wary about having lights in the halls is, of course, that it costs money to burn lights. Now John H. Jordan, of Scranton, Pa., would come to the rescue. Landladies need worry no longer about what the meter is doing. Moreover roomers may have light any time they want it.

The how of his plan is this. The contrivance consists in part of an electromagnet connected in series with a push-button lamp-switch. When the roomer comes in and pushes



No longer need the roomer come in and fumble for the socket this way. He simply pushes a button in the wall. The lamp is lighted for just three minutes. The push button energizes the solenoid. It pulls down the core, winding the spring, closing the lamp circuit. It later opens

the button, this electromagnet pulls down a lever. The lever winds up a coil spring. The coil spring runs a clockwork. The clockwork runs until the spring is unwound again, meanwhile permitting the lever slowly to move back to its old position. This takes about three minutes, and during that interval a switch, mounted at the lower end of the lever, has been "on." This switch caused the electric lights to light, and the three-minute

interval they stay lit is sufficient for the roomer to get upstairs or wherever else he is going. Simple, isn't it? The landlady knows that the roomer will have to get up at three-minute intervals and punch that switch if the hall light stays lighted permanently. This is unlikely. Therefore she rests in peace.

The contrivance may be applied equally well to attic or basement lights. Forgetting to turn these off is a common habit and a machine that will do it automatically saves on the monthly lighting bill. Closets and storerooms also need the device.

