

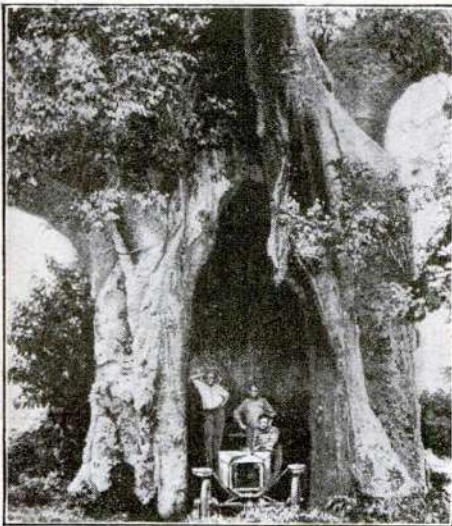
Odd Motor Caravan on the Riviera Carries Its Own Canoe

THE latest style for a sight-seeing trip on the Riviera is by motor caravan. Vacationists at Cannes, France, recently were startled by the sight of a diminutive

car not much longer than the canoe it carried on its odd top, drawing a very large hooded trailer that served as a covered home on wheels. In appearance

the trailer resembled a great armored car.

The strange caravan, canoe and all, is shown above just as it appeared in Cannes.



A snug garage in a hollow tree

Great Hollow Tree Trunk a Natural Garage

A HUGE natural garage in the hollow of a great baobab tree, was discovered recently by a motorist in Nyassaland, Africa, shortly before nightfall. His car, a Ford, was accommodated handily by the high sheltered space. Despite its great hollow, the tree was alive.

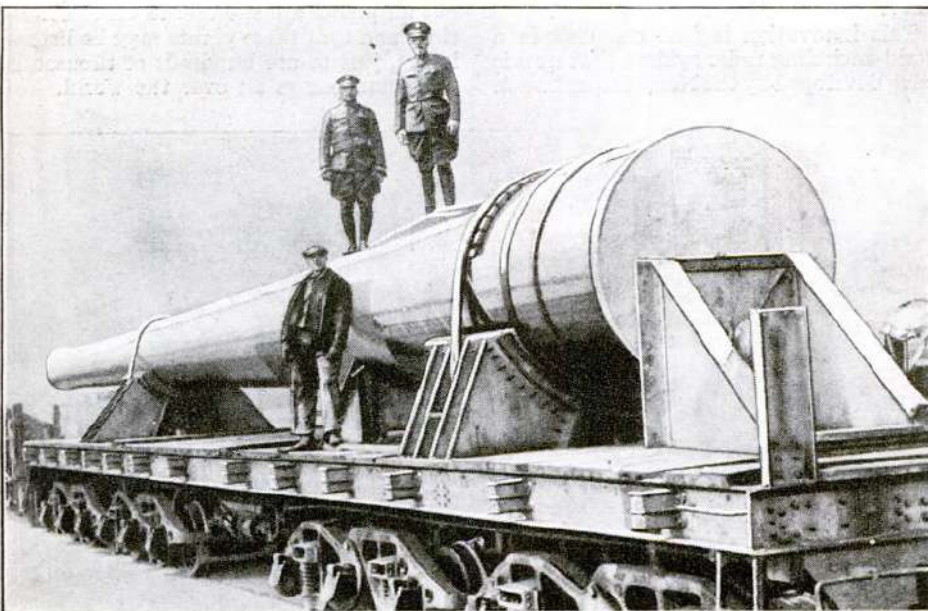
Earth's Permanent Wave

WITHIN the earth is a large wave that moves around the planet once every 8800 years, according to Ludovic MacLellan Mann, a member of the British Royal Anthropological Society. He says the wave moves the position of the earth's axis and poles slightly, resulting in climatic changes.

Shipping a Mammoth Coast Defense Gun

ONE of the world's largest coast defense guns, recently shipped to New England, is shown below. The 16-inch

weapon weighs 210 tons. A specially constructed car was necessary for transportation and 50 men to move it.



How the huge gun, weighing 210 tons, was shipped on a special flat car



The world's largest lamp, above, compared with the smallest, at right

Smallest and Largest Lamps

THE world's smallest and largest incandescent lamps—one rated at about one quarter candlepower and the other at 100,000 candlepower—recently were exhibited by the General Electric Company.

The large lamp, with a bulb 12 inches in diameter and 18½ inches high, was developed for motion-picture studios. It is 1290 times larger than the average household lamp. The current required to operate three of these lamps would run the average street car.

The small lamp, only a quarter of an inch in diameter, uses but one-fifth of a volt of electricity.