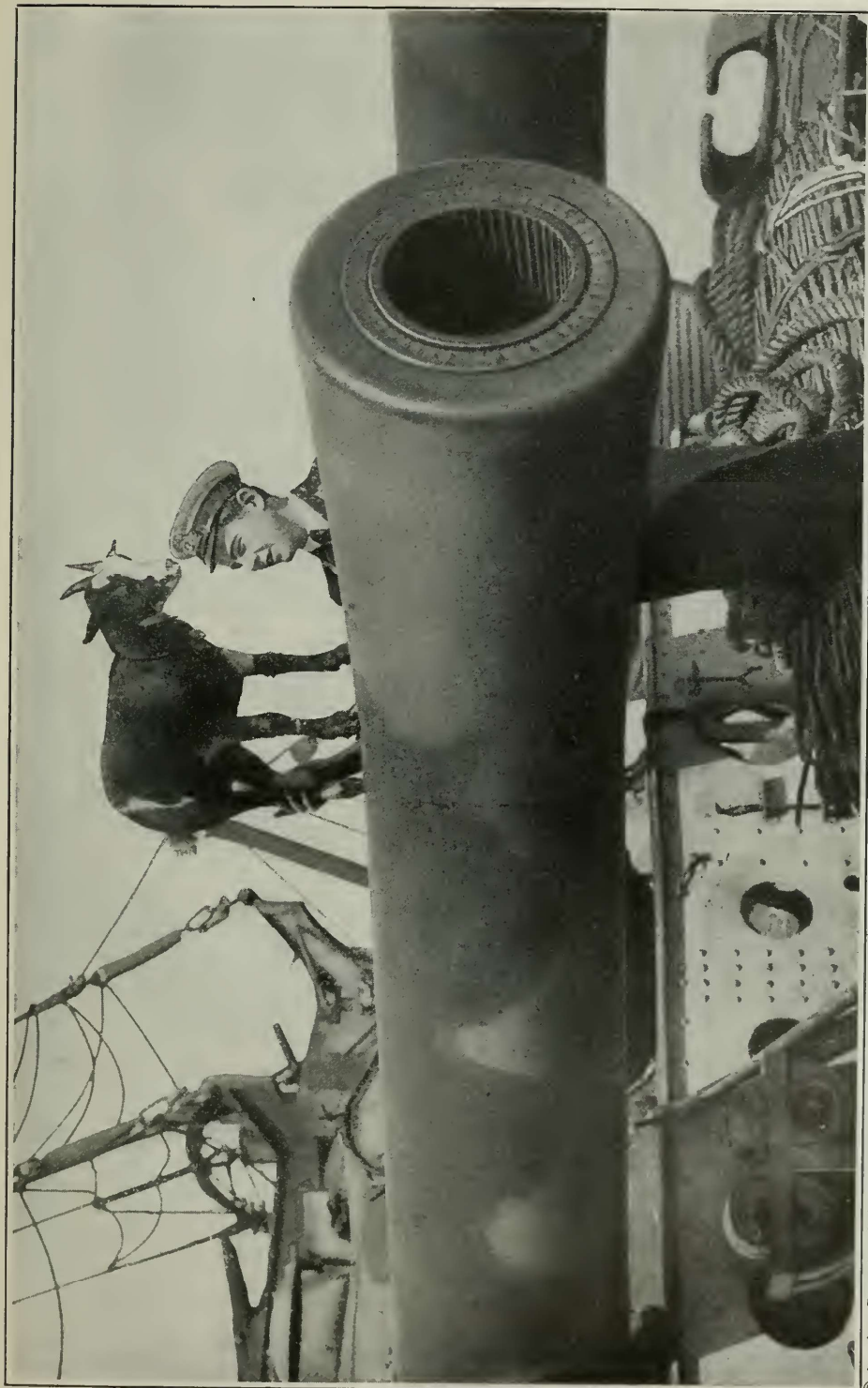


## The Scepter of Britannia



© American Press Association

One of the twelve-inch guns on the British battleship "Canopus." Although these guns are extremely powerful, and throw a great mass of metal, a newer ship, such as the "Queen Elizabeth," could stay well out of range of the "Canopus," while with her bigger guns she could hammer her opponent to pieces without the slightest risk to herself