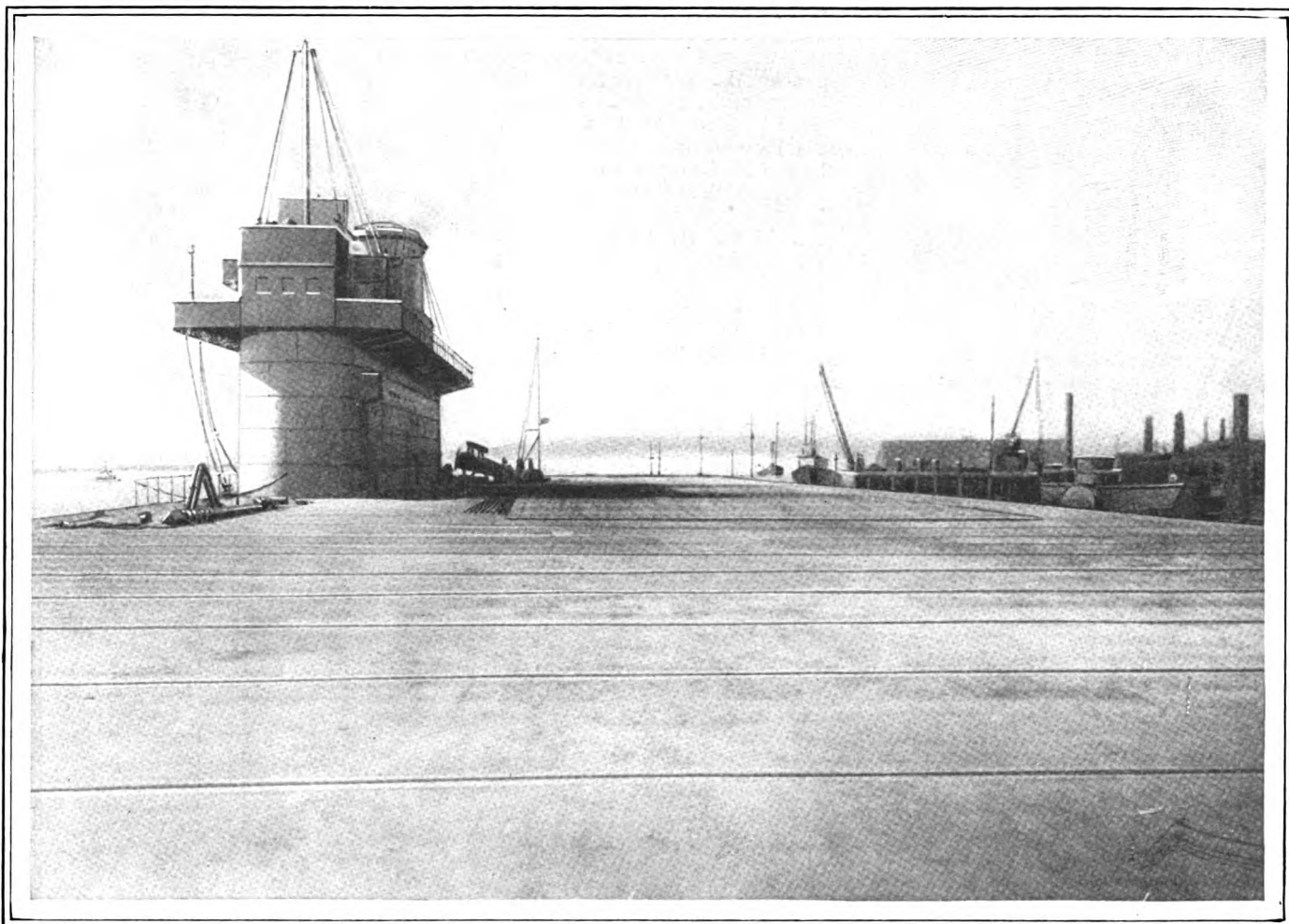
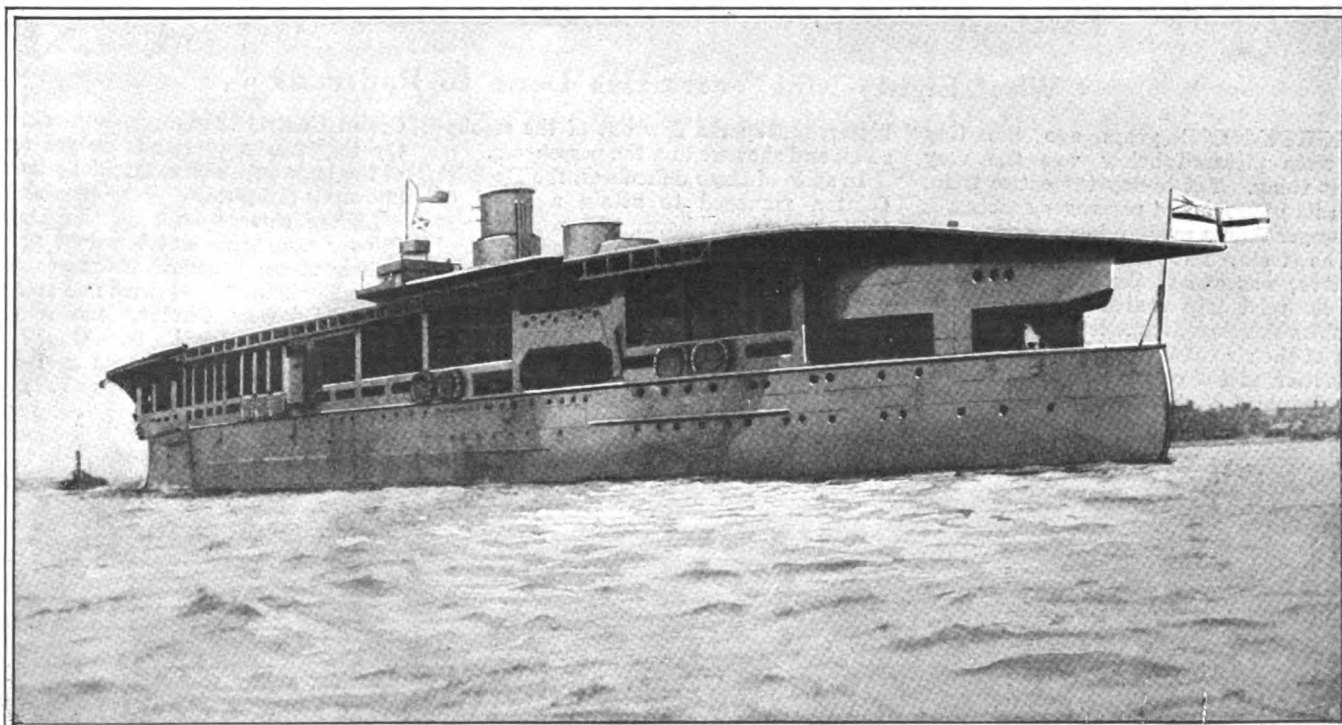


This Flying-Field is the Deck of a Ship



H. M. S. *Eagle*, of the British navy, is a mammoth aircraft-carrier. The flat upper deck was built for airplanes "taking off" and landing. The displacement of the vessel is more than 30,000

tons. During the war it was in service, under the name of the *Almirante Cochrane*. Note the displacement of the bridges and smokestack from the center to the extreme edge of the starboard side



The war showed that a fleet is helpless without aircraft. While seaplanes have the advantage of being able to alight on water, they are not entirely satisfactory. Land machines have proved to be more so.

But a great deal of space is required to accommodate these airships, more than a battleship can afford. Hence the *Eagle*, provided with a large flat deck, is one of the latest acquisitions of Great Britain's navy