

# Spectacular Inventions

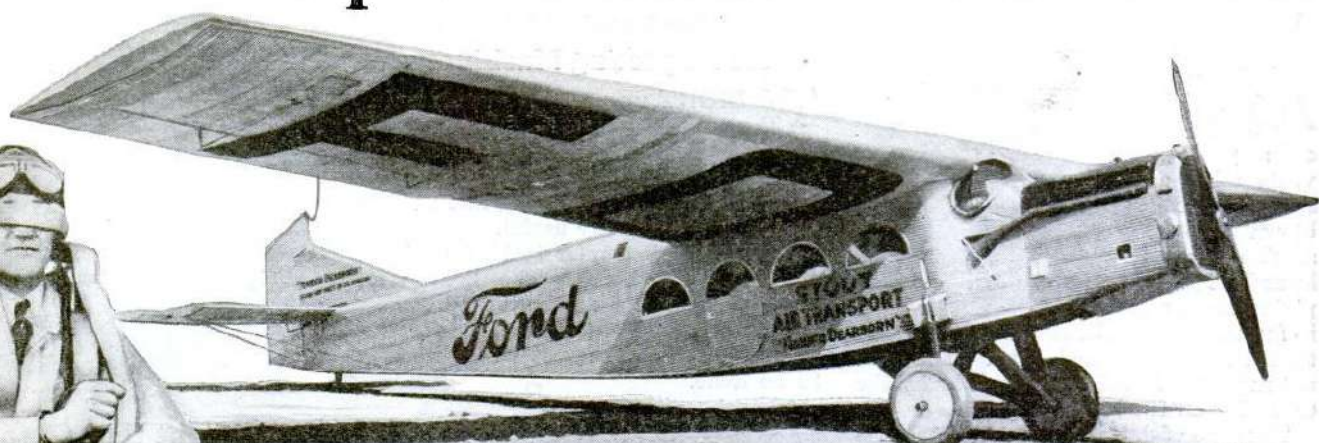


## Leaps Blindfolded

Blindfolded, shackled, and handcuffed, Sergt. C. E. Conrad, of Kelly Field, San Antonio, Tex., recently made a parachute jump from an altitude of 4820 feet, to prove that an aviator could land safely, though helplessly wounded

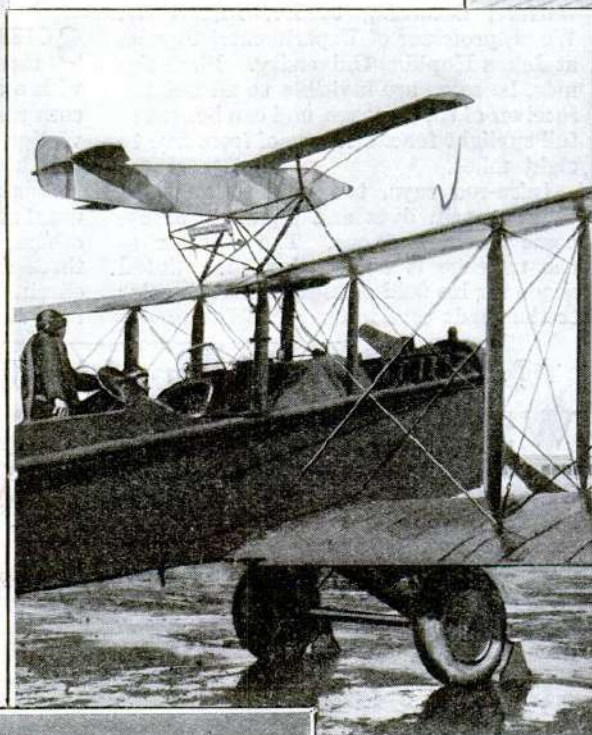
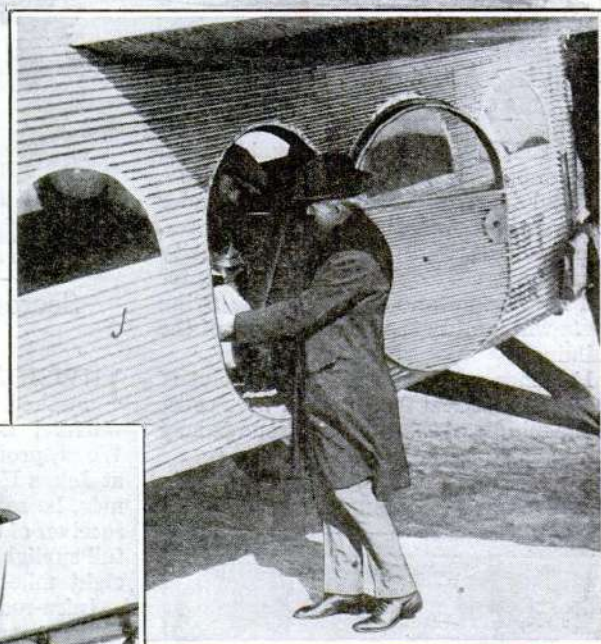
## New Flying Boat

To obtain maximum efficiency in propulsion, a novel type of duralumin all-metal flying boat (below) with twin engines located in the wing centers, has been developed in England



## Huge Air Freighters

The recent successful round-trip flight of Henry Ford's *Maiden Dearborn* between Detroit and Chicago, marked the inauguration of the first strictly commercial air freight line in the United States. One thousand pounds of freight was carried each way, a distance of 285 miles, at an average speed of 100 miles an hour. The picture at the right shows Henry Ford placing part of the cargo in the airplane's fuselage



## Glider Carries Bomb

A new motorless glider (at left) for discharging heavy bombs from a battle plane, recently was perfected by Brig.-Gen. William Mitchell, U. S. Army Air Service. Its purpose is to permit the pilot of a raiding bomber to release his cargo at a safe distance from enemy anti-aircraft gunfire

## Knock-Down Plane

Quickly detachable parts of a new type of two-seater fighting airplane (below) are said to make it possible to assemble it complete, ready for flight, in less than an hour, and disassemble it in as brief a time as 20 minutes

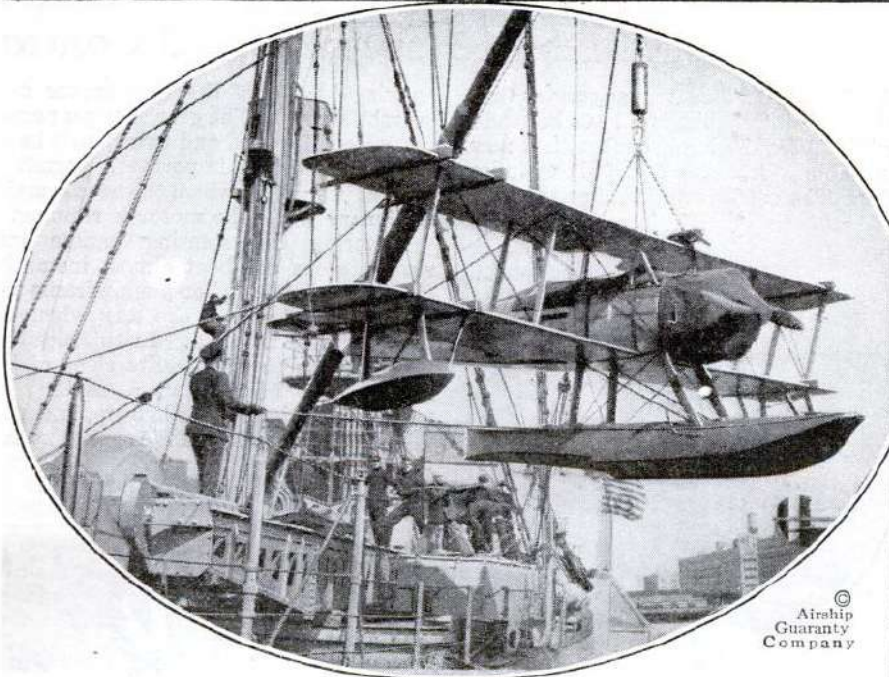
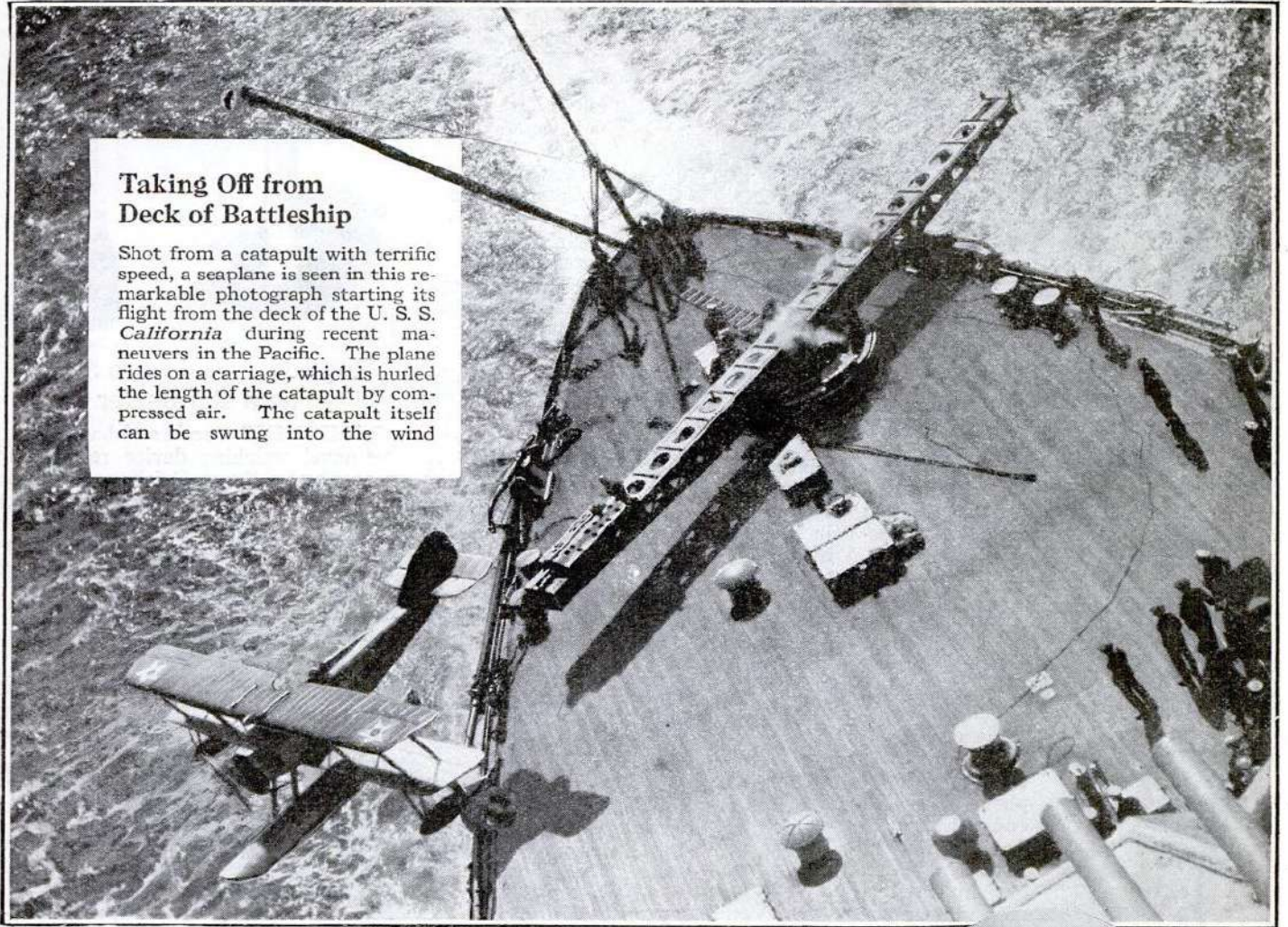




# Mark Progress in Flight

## Taking Off from Deck of Battleship

Shot from a catapult with terrific speed, a seaplane is seen in this remarkable photograph starting its flight from the deck of the U. S. S. *California* during recent maneuvers in the Pacific. The plane rides on a carriage, which is hurled the length of the catapult by compressed air. The catapult itself can be swung into the wind



## The Air Scout Returns

Scout planes are becoming the eyes of modern navies. This picture shows the new scout cruiser *Memphis* taking aboard one of the two seaplanes with which she is equipped. The launching catapult is seen behind the plane

## New Floating Mooring-Mast

The latest design in airship mooring-masts (right), developed in England, has two swinging horizontal arms that embrace the nose of the moored ship, and also serve as passage-ways for the landing and discharge of passengers

